

# Troponin T STAT

Troponin T STAT (Short Turn Around Time), CARDIAC T

**cobas**<sup>®</sup>

REF		SYSTEM
04660307 190	100	Elecsys 2010 <b>cobas e 411</b> <b>cobas e 601</b> <b>cobas e 602</b>

## English

### Intended use

Immunoassay for the in vitro quantitative determination of troponin T in human serum and plasma. This assay can be used as an aid in the differential diagnosis of acute coronary syndrome to identify necrosis, e.g. acute myocardial infarction. The test is further indicated for the risk stratification of patients presenting with acute coronary syndrome and for cardiac risk in patients with chronic renal failure. The test may also be useful for the selection of more intensive therapy and intervention in patients with elevated levels of cardiac troponin T.

The electrochemiluminescence immunoassay "ECLIA" is intended for use on Elecsys and **cobas e** immunoassay analyzers.

### Summary

Troponin T (TnT) is a component of the contractile apparatus of the striated musculature. Although the function of TnT is the same in all striated muscles, TnT originating exclusively from the myocardium (cardiac TnT, molecular weight 39.7 kD) clearly differs from skeletal muscle TnT. As a result of its high tissue-specificity, cardiac troponin T (cTnT) is a cardiospecific, highly sensitive marker for myocardial damage. In cases of acute myocardial infarction (AMI), troponin T levels in serum rise about 3-4 hours after the occurrence of cardiac symptoms and can remain elevated for up to 14 days.<sup>1,2</sup>

Troponin T is an independent prognostic marker which can predict the near-, mid- and even long-term outcome of patients with acute coronary syndrome (ACS).<sup>3,4,5,6,7</sup>

In addition, four multicenter trials involving more than 7000 patients have shown that troponin T is also useful to identify patients that benefit from anti-thrombotic therapy (GPIIb/IIIa inhibitors, low molecular weight heparin).<sup>8,9,10,11,12</sup>

Because it has been proven that cardiac troponin is an independent marker which best predicts the outcome of patients with ACS and is a useful tool in guiding anti-thrombotic therapy, the joint committee of the European Society of Cardiology (ESC) and American College of Cardiology (ACC) redefined myocardial infarction (MI). According to this new definition, MI is diagnosed when blood levels of cardiac troponin are above the 99<sup>th</sup> percentile of reference limit (of a healthy population) in the clinical setting of acute ischemia. The imprecision (coefficient of variation) at the 99<sup>th</sup> percentile for each troponin assay should be defined as less than or equal to 10%.<sup>13</sup>

Thus, patients with ACS and elevated cardiac troponin and/or CK-MB are considered to have experienced a non-ST-elevation MI (NSTEMI); whereas the diagnosis of unstable angina is established if cardiac troponin and CK-MB are within the reference range. This redefinition of MI is now also part of the new ACC/AHA guidelines for the management of patients with unstable angina and NSTEMI.<sup>14</sup>

Based on the redefinition of myocardial infarction several recommendations have been published concerning the role of cardiac troponin testing in patients with ACS.<sup>15,16</sup>

Myocardial cell injury leading to elevated troponin T concentrations in the blood can also occur in other clinical settings like congestive heart failure,<sup>17</sup> cardiomyopathy,<sup>18</sup> myocarditis,<sup>19</sup> heart contusion,<sup>20</sup> renal failure,<sup>21</sup> lung embolism,<sup>22</sup> stroke,<sup>23</sup> left ventricular dysfunction in septic shock,<sup>24</sup> and interventional therapy like cardiac surgery,<sup>25</sup> non-cardiac surgery,<sup>26</sup> PTCA,<sup>27</sup> and drug-induced cardiotoxicity.<sup>28</sup> In many of these cases – in particular in patients with renal failure – increased levels of cardiac troponin T identify patients with poorer prognosis.<sup>29,30,31,32,33,34</sup>

In summary, elevated troponin levels are indicative of myocardial injury, but elevations are not synonymous with an ischemic mechanism of injury. The term MI should be used when there is evidence of cardiac damage, as detected by marker proteins in a clinical setting consistent with myocardial ischemia. If the clinical circumstance suggests that an ischemic mechanism is unlikely, other causes of cardiac injury should be pursued.<sup>15</sup>

The Elecsys Troponin T assay employs two monoclonal antibodies specifically directed against human cardiac troponin T.<sup>35,36</sup> The antibodies recognize two epitopes (amino acid position 125-131 and 136-147) located in the central part of the cardiac troponin T protein, which consists of 288 amino acids. Elecsys Troponin T assay detects free troponin T as well as binary and ternary complexes of troponin.<sup>37</sup>

Troponin T CalSet contains recombinant human cardiac troponin T (rec. hcTnT). The rec. hcTnT is isolated from cell culture of E. coli BL21 containing a pET vector with human cardiac troponin T isoform 3 gene. After fermentation, the cells are disrupted by sonication and rec. hcTnT is purified by ion exchange chromatography. Purified rec. hcTnT is further characterized by SDS PAGE, Western blotting, immunological activity, and protein content.<sup>38</sup>

### Test principle

Sandwich principle. Total duration of assay: 9 minutes.

Elecsys 2010 and **cobas e 411** analyzers:

- 1st incubation: 15 µL of sample, a biotinylated monoclonal troponin T-specific antibody, and a monoclonal troponin T-specific antibody labeled with a ruthenium complex<sup>a)</sup> react to form a sandwich complex.
- 2nd incubation: After addition of streptavidin-coated microparticles, the complex becomes bound to the solid phase via interaction of biotin and streptavidin.

**cobas e 601** and **cobas e 602** analyzers:

- During a 9 minute incubation, antigen in the sample (15 µL), a biotinylated monoclonal troponin T-specific antibody, a monoclonal troponin T-specific antibody labeled with a ruthenium complex and streptavidin-coated microparticles react to form a sandwich complex, which is bound to the solid phase.

All analyzers:

- The reaction mixture is aspirated into the measuring cell where the microparticles are magnetically captured onto the surface of the electrode. Unbound substances are then removed with ProCell/ProCell M. Application of a voltage to the electrode then induces chemiluminescent emission which is measured by a photomultiplier.
- Results are determined via a calibration curve which is instrument-specifically generated by 2-point calibration and a master curve provided via the reagent barcode.

a) Tris(2,2'-bipyridyl)ruthenium(II)-complex (Ru(bpy)<sub>3</sub><sup>2+</sup>)

### Reagents - working solutions

The reagent rackpack is labeled as TNTSTAT.

- M Streptavidin-coated microparticles (transparent cap), 1 bottle, 6.5 mL:  
Streptavidin-coated microparticles 0.72 mg/mL; preservative.
- R1 Anti-troponin T-Ab~biotin (gray cap), 1 bottle, 10 mL:  
Biotinylated monoclonal anti-troponin T-antibody (mouse) 1.5 mg/L;  
phosphate buffer 100 mmol/L, pH 6.0; preservative; inhibitors.
- R2 Anti-troponin T-Ab~Ru(bpy)<sub>3</sub><sup>2+</sup> (black cap), 1 bottle, 10 mL:  
Monoclonal anti-troponin T-antibody (mouse) labeled with ruthenium complex 1.2 mg/L; phosphate buffer 100 mmol/L, pH 6.0;  
preservative.

### Precautions and warnings

For in vitro diagnostic use.

Exercise the normal precautions required for handling all laboratory reagents.

Disposal of all waste material should be in accordance with local guidelines. Safety data sheet available for professional user on request.

# Troponin T STAT

Troponin T STAT (Short Turn Around Time), CARDIAC T



Avoid foam formation in all reagents and sample types (specimens, calibrators and controls).

## Reagent handling

The reagents in the kit have been assembled into a ready-for-use unit that cannot be separated.

All information required for correct operation is read in automatically from the respective reagent barcodes.

## Storage and stability

Store at 2-8 °C.

Do not freeze.

Store the Elecsys reagent kit **upright** in order to ensure complete availability of the microparticles during automatic mixing prior to use.

Stability:	
unopened at 2-8 °C	up to the stated expiration date
after opening at 2-8 °C	12 weeks
on the analyzers	8 weeks

## Specimen collection and preparation

Only the specimens listed below were tested and found acceptable.

Serum collected using standard sampling tubes or tubes containing separating gel.

K<sub>2</sub>-EDTA, K<sub>3</sub>-EDTA, Li-heparin and sodium citrate plasma.

Criterion: Recovery within 90-110 % of serum value or slope 0.9-1.1 + intercept within  $\pm 2 \times$  analytical sensitivity (LDL) + coefficient of correlation  $> 0.95$ .

Do not use oxalate/fluoride plasma samples for this assay.

Stable for 24 hours at 2-8 °C, 12 months at -20 °C. Freeze only once.

The sample types listed were tested with a selection of sample collection tubes that were commercially available at the time of testing, i.e. not all available tubes of all manufacturers were tested. Sample collection systems from various manufacturers may contain differing materials which could affect the test results in some cases. When processing samples in primary tubes (sample collection systems), follow the instructions of the tube manufacturer.

Centrifuge samples containing precipitates before performing the assay.

Do not use samples and controls stabilized with azide.

Ensure the samples, calibrators and controls are at 20-25 °C prior to measurement.

## Materials provided

See "Reagents – working solutions" section for reagents.

## Materials required (but not provided)

- [REF] 04856643190, Troponin T STAT CalSet, for 4 x 1 mL
- [REF] 03530469190, PreciControl Troponin T, for 2 x 2 mL each of PreciControl Troponin T 1 and 2
- [REF] 11732277122, Diluent Universal, 2 x 16 mL sample diluent or [REF] 03183971122, Diluent Universal, 2 x 36 mL sample diluent
- General laboratory equipment
- Elecsys 2010 or **cobas e** analyzer

Accessories for Elecsys 2010 and **cobas e** 411 analyzers:

- [REF] 11662988122, ProCell, 6 x 380 mL system buffer
- [REF] 11662970122, CleanCell, 6 x 380 mL measuring cell cleaning solution
- [REF] 11930346122, Elecsys SysWash, 1 x 500 mL washwater additive
- [REF] 11933159001, Adapter for SysClean
- [REF] 11706802001, Elecsys 2010 AssayCup, 60 x 60 reaction vessels
- [REF] 11706799001, Elecsys 2010 AssayTip, 30 x 120 pipette tips

Accessories for **cobas e** 601 and **cobas e** 602 analyzers:

- [REF] 04880340190, ProCell M, 2 x 2 L system buffer
- [REF] 04880293190, CleanCell M, 2 x 2 L measuring cell cleaning solution

- [REF] 03023141001, PC/CC-Cups, 12 cups to prewarm ProCell M and CleanCell M before use
  - [REF] 03005712190, ProbeWash M, 12 x 70 mL cleaning solution for run finalization and rinsing during reagent change
  - [REF] 12102137001, AssayTip/AssayCup Combimagazine M, 48 magazines x 84 reaction vessels or pipette tips, waste bags
  - [REF] 03023150001, WasteLiner, waste bags
  - [REF] 03027651001, SysClean Adapter M
- Accessories for all analyzers:
- [REF] 11298500316, Elecsys SysClean, 5 x 100 mL system cleaning solution
  - [REF] 11298500160, Elecsys SysClean, 5 x 100 mL system cleaning solution (for USA)

## Assay

For optimum performance of the assay follow the directions given in this document for the analyzer concerned. Refer to the appropriate operator's manual for analyzer-specific assay instructions.

Resuspension of the microparticles prior to use and the reading in of the test-specific parameters via the reagent barcode take place automatically. No manual input is necessary. If in exceptional cases the barcode cannot be read, enter the 15-digit sequence of numbers.

Bring the cooled reagents to approx. 20 °C and place on the reagent disk (20 °C) of the analyzer. Avoid foam formation. The system automatically regulates the temperature of the reagents and the opening/closing of the bottles.

## Calibration

Traceability: The Troponin T STAT assay (4<sup>th</sup> generation, [REF] 04660307) has been standardized against the Troponin T STAT assay (3<sup>rd</sup> generation, [REF] 12017423). This in turn was originally standardized against the Enzymun-Test Troponin T (CARDIAC T) method.

Every Elecsys reagent set has a barcoded label containing specific information for calibration of the particular reagent lot. The predefined master curve is adapted to the analyzer using the relevant CalSet.

**Calibration frequency:** Calibration must be performed once per reagent lot using fresh reagent (i.e. not more than 24 hours since the reagent kit was registered on the analyzer). Renewed calibration is recommended as follows:

- after 1 month (28 days) when using the same reagent lot
- after 7 days (when using the same reagent kit on the analyzer)
- as required: e.g. quality control findings outside the defined limits

## Quality control

For quality control, use PreciControl Troponin T.

In addition, other suitable control material can be used.

Controls for the various concentration ranges should be run individually at least once every 24 hours when the test is in use, once per reagent kit, and following each calibration.

The control intervals and limits should be adapted to each laboratory's individual requirements. Values obtained should fall within the defined limits. Each laboratory should establish corrective measures to be taken if values fall outside the defined limits.

Follow the applicable government regulations and local guidelines for quality control.

## Calculation

The analyzer automatically calculates the analyte concentration of each sample (either in µg/L or ng/mL).

## Limitations - interference

The assay is unaffected by icterus (bilirubin  $< 462 \mu\text{mol/L}$  or  $< 27 \text{ mg/dL}$ ), hemolysis (Hb  $< 0.062 \text{ mmol/L}$  or  $< 0.1 \text{ g/dL}$ ; samples showing visible signs of hemolysis may cause interference.), lipemia (Intralipid  $< 1500 \text{ mg/dL}$ ) and biotin ( $< 205 \text{ nmol/L}$  or  $< 50 \text{ ng/mL}$ ).

Falsely depressed results are obtained when using samples with hemoglobin concentrations  $> 0.1 \text{ g/dL}$ .

Criterion: Recovery within  $\pm 20 \%$  of initial value at troponin T concentrations  $< 0.1 \mu\text{g/L}$  or  $\text{ng/mL}$  ( $\pm 10 \%$  at troponin T concentrations  $\geq 0.1 \mu\text{g/L}$  or  $\text{ng/mL}$ ).

# Troponin T STAT

Troponin T STAT (Short Turn Around Time), CARDIAC T

cobas®

Samples should not be taken from patients receiving therapy with high biotin doses (i.e. > 5 mg/day) until at least 8 hours following the last biotin administration.

No interference was observed from rheumatoid factors up to a concentration of 2000 IU/mL.

There is no high-dose hook effect at troponin T concentrations up to 400 µg/L (ng/mL).

In vitro tests were performed on 50 commonly used pharmaceuticals. No interference with the assay was found.

Plasma samples collected using tubes containing oxalate/fluoride, revealed sample-dependent low troponin T values when compared to results obtained on serum samples. Therefore, do not use oxalate/fluoride plasma samples for the assay.

In rare cases, interference due to extremely high titers of antibodies to analyte-specific antibodies, streptavidin or ruthenium can occur. These effects are minimized by suitable test design.

For diagnostic purposes, the results should always be assessed in conjunction with the patient's medical history, clinical examination and other findings.

## Limits and ranges

### Measuring range

0.010-25.0 µg/L or ng/mL (defined by the lower detection limit and the maximum of the master curve). Values below the lower detection limit are reported as < 0.010 µg/L (ng/mL). Values above the measuring range are reported as > 25.0 µg/L or ng/mL (or up to 250 µg/L or ng/mL for 10-fold diluted samples).

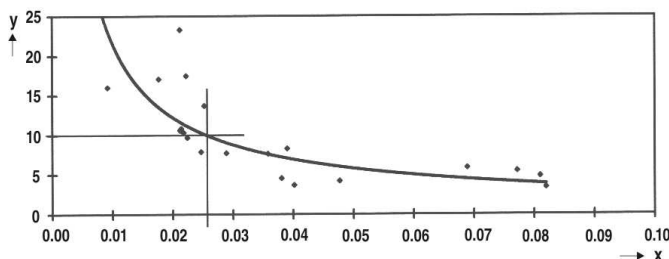
### Lower limits of measurement

#### Lower detection limit of the test

Lower detection limit: 0.010 µg/L (ng/mL)

The lower detection limit represents the lowest measurable analyte level that can be distinguished from zero. It is calculated as the value lying three standard deviations above that of the lowest standard (master calibrator, standard 1 + 3 SD, repeatability study, n = 21).

≥ 0.030 µg/L (ng/mL) is the troponin T concentration, which is read off from the trendline, that can be reproducibly measured with the intermediate precision CV of 10 %.



x: Concentration (ng/mL)

y: CV (%)

When taking lot to lot variability into consideration, at 0.030 ng/mL a CV of 18 % is achieved and at 0.060 ng/mL a CV of 10 % is achieved.

### Dilution

Samples with troponin T concentrations above the measuring range can be diluted with Diluent Universal. The recommended dilution is 1:10 (either automatically by the Elecsys 2010 or **cobas e** analyzers or manually). The concentration of the diluted sample must be > 1 µg/L (ng/mL).

After manual dilution, multiply the result by the dilution factor.

After dilution by the analyzers, the Elecsys 2010 and **cobas e** software automatically takes the dilution into account when calculating the sample concentration.

### Expected values

In studies performed with the Elecsys Troponin T assay involving 1951 healthy volunteers, the upper reference limit (99<sup>th</sup> percentile) for troponin T was < 0.01 µg/L (ng/mL).<sup>b)</sup>

The lowest concentration with a CV less than or equal to 10 % with the Elecsys Troponin T assay was 0.030 µg/L (ng/mL) (intermediate within lot precision) or 0.060 µg/L (ng/mL) (intermediate lot to lot precision).

Based on the WHO criteria for the definition of AMI from the 1970's, the cutoff (clinical discriminator) value for troponin T is 0.100 µg/L (ng/mL) according to ROC analysis.<sup>39,40</sup>

Due to the release kinetics of troponin T, a negative result within the first hours of the onset of symptoms does not rule out myocardial infarction with certainty. If myocardial infarction is still suspected, repeat the test at appropriate intervals.

### Factors associated with elevated values<sup>41,42,43,44,45,46,47</sup>

Published clinical studies have shown elevations of troponin T in patients with myocardial injury, as seen in unstable angina pectoris, cardiac contusions, and heart transplants. Elevations have also been seen in patients with rhabdomyolysis and polymyositis.

Each laboratory should investigate the transferability of the expected values to its own patient population and if necessary determine its own reference ranges.

b) Data (status July 1999) combined from: Multicenter evaluation of troponin T (3rd generation), April 1999, and International Elecsys 1010 study, Cardiac markers, March 1999.

### Specific performance data

Representative performance data on the analyzers are given below. Results obtained in individual laboratories may differ.

### Precision

Precision was determined using Elecsys reagents, pooled human sera and controls in a modified protocol (EP5-A) of the CLSI (Clinical and Laboratory Standards Institute): 6 times daily for 10 days (n = 60). The following results were obtained:

Elecsys 2010 and <b>cobas e</b> 411 analyzers					
Sample	Mean µg/L (ng/mL)	Repeatability		Intermediate precision	
		SD µg/L (ng/mL)	CV %	SD µg/L (ng/mL)	CV %
Human serum 1	0.047	0.002	4.5	0.003	6.2
Human serum 2	0.652	0.013	2.0	0.030	4.6
Human serum 3	6.09	0.177	2.9	0.343	5.6
PreciControl TNT1	0.137	0.003	2.2	0.005	3.5
PreciControl TNT2	2.89	0.071	2.5	0.136	4.7

Precision was determined using Elecsys reagents, pooled human sera and controls in a separate study according to protocol EP5-A2 of the CLSI (Clinical and Laboratory Standards Institute): 2 runs per day in duplication each for 21 days (n = 84). The following results were obtained:

<b>cobas e</b> 601 and <b>cobas e</b> 602 analyzers					
Sample	Mean µg/L (ng/mL)	Repeatability		Intermediate precision	
		SD µg/L (ng/mL)	CV %	SD µg/L (ng/mL)	CV %
Human serum 1	0.017	0.003	15.7	0.003	16.6
Human serum 2	0.020	0.002	11.4	0.002	12.2
Human serum 3	0.081	0.002	2.7	0.003	3.7
Human serum 4	0.118	0.003	2.7	0.004	3.3
Human serum 5	0.470	0.009	1.9	0.014	3.0
Human serum 6	2.89	0.060	2.1	0.091	3.1
Human serum 7	24.2	0.449	1.9	0.668	2.8
PreciControl TNT1	0.066	0.002	3.1	0.003	4.1
PreciControl TNT2	2.15	0.028	1.3	0.049	2.3

### Method comparison

A comparison of the Elecsys Troponin T STAT assay (3<sup>rd</sup> generation; x) with the Elecsys Troponin T STAT assay (4<sup>th</sup> generation; y) using clinical samples gave the following correlations:

# Troponin T STAT

Troponin T STAT (Short Turn Around Time), CARDIAC T

cobas®

Number of samples measured: 60

Passing/Bablok<sup>48</sup> Linear regression

$y = 1.012x - 0.017$

$y = 1.03x - 0.03$

$r = 0.985$

$r = 1.000$

The sample concentrations were between approx. 0.08 and 18.5 µg/L (ng/mL).

## Analytical specificity

For the monoclonal antibodies used, the following cross-reactivities were found:

h-skeletal muscle troponin T 0.001 %, h-cardiac troponin I 0.002 %, h-skeletal muscle tropomyosin 0.001 %, h-cardiac tropomyosin 0.1 %, and h-cardiac myosin light chain 1 0.003 %.

## Diagnostic sensitivity and specificity

Data are based on blood samples taken from 294 patients with chest pain and suspected myocardial infarction admitted to the emergency department during a 10 week period.<sup>40</sup>

154 patients (171 samples) were not hospitalized because AMI or other serious diseases (e.g. pulmonary embolism) were ruled out. 58 patients (576 samples) with acute myocardial infarction (AMI) classified acc. to WHO standards, 50 patients (396 samples) with unstable angina pectoris (UAP) and 32 patients (212 samples) without acute ischemic syndromes were admitted to the hospital.

These samples were taken at 0, 3, 6, 12, 24, 48, 72, and 96 hours after admission or until discharge and measured by the following test methods:

- Elecsys Troponin T 2nd gen.
- Enzymun-Test Troponin T
- Elecsys CK-MB mass
- Stratus CK-MB mass
- Total CK activity via CHEM 1 analyzer

Analysis of clinical sensitivity and specificity for the detection of myocardial infarction on admission and the following samples showed comparable results between Elecsys measurements and the respective reference methods - see table below. Three hours after admission, most AMI patients underwent effective reperfusion therapies which partly accounts for high sensitivities in follow up blood samples.

The results of apparently low specificity for troponin T in AMI, compared to CK-MB, are largely due to the detection of minor myocardial damage (MMD) in patients with unstable angina pectoris: excluding these patients from analysis leads to specificities of almost 100 % for troponin T for the detection of AMI. For example, at 6 hours after admission specificity for the Elecsys Troponin T assay would be 97.5 %, at 24 hours 100 %. Specificity for CK-MB mass at 6 hours after admission would be 92.9 %, at 24 hours, 91.7 % if UAP were excluded for the calculation of the specificity for AMI detection.

Hours after admission	0	3	6	12	24	48	72	96
Elecsys Troponin T assay, 2nd gen.								
Sensitivity <sup>†</sup>	60.7	96.0	98.0	100	100	97.7	95.7	97.7
Specificity <sup>†</sup>	96.5	86.6	82.5	83.3	83.9	86.9	82.7	87.8
Enzymun-Test Troponin T method								
Sensitivity <sup>†</sup>	60.7	96.0	98.0	100	100	97.3	95.7	97.7
Specificity <sup>†</sup>	95.8	84.4	80.3	82.4	85.3	88.2	82.8	88.9
Elecsys CK-MB assay								
Sensitivity <sup>†</sup>	69.6	98.0	100	95.7	89.4	75.0	34.8	18.6
Specificity <sup>†</sup>	94.1	86.7	84.5	85.3	89.7	94.1	100	100
Stratus CK-MB								
Sensitivity <sup>†</sup>	63.0	98.0	100	95.7	87.2	77.3	37.0	11.6
Specificity <sup>†</sup>	94.4	87.5	85.7	84.9	90.6	95.5	100	100
Total CK activity								

Hours after admission	0	3	6	12	24	48	72	96
Sensitivity <sup>†</sup>	56.9	86.1	93.3	92.9	83.7	69.2	58.5	31.6
Specificity <sup>†</sup>	86.6	84.2	84.9	86.7	88.1	93.4	98.1	97.9
Total number of patients	294	140	121	115	115	112	104	97

<sup>†</sup> For calculation of the sensitivity and specificity the group of UAP patients is included in the control group.

## References

- 1 Katus HA, Remppis A, Looser S, et al. Enzyme linked immunoassay of cardiac troponin T for the detection of acute myocardial infarction in patients. *Mol Cell Cardiol* 1989;21(7):1349-1353.
- 2 Katus HA, Scheffold T, Remppis A, et al. Proteins of the troponin complex. *Laboratory Medicine* 1992;23(5):311-317.
- 3 Hamm CW, Ravkilde J, Gerhardt W, et al. The prognostic value of serum troponin T in unstable angina. *N Engl J Med* 1992;327(3):146-150.
- 4 Ohman EM, Armstrong PW, Christenson RH, et al. Risk stratification with admission cardiac troponin T levels in acute myocardial ischemia. *N Engl J Med* 1996;335:1333-1334.
- 5 Christenson RH, Duh SH, Newby LK, et al. Cardiac troponin T and cardiac troponin I: relative values in short-term risk stratification of patients with acute coronary syndromes. *Clin Chem* 1998;44(3):494-501.
- 6 Lindahl B, Diderholm E, Lagerqvist B, et al. and the FRISC II investigators. Mechanisms behind the prognostic value of Troponin T in unstable coronary artery disease: a FRISC II substudy. *J Am Coll Card* 2001;38:979-986.
- 7 Aviles RJ, Askari AT, Lindahl B, et al. Troponin T levels in patients with acute coronary syndromes, with or without renal dysfunction. *N Engl J Med* 2002;346:2047-2052.
- 8 Lindahl B, Venge P, Wallentin L. Troponin T Identifies Patients With Unstable Coronary Artery Disease Who Benefit From Long-Term Antithrombotic Protection. *J Am Coll Cardiol* 1997;29(1):43-48.
- 9 Hamm CW, Heeschen C, Goldmann B, et al. Benefit of abciximab in patients with refractory unstable angina in relation to serum troponin T levels. *N Engl J Med* 1999;340(21):1623-1629.
- 10 Heeschen C, Hamm CW, Goldmann BU, et al. for PRISM study investigators. Troponin concentrations for stratification of patients with acute coronary syndromes in relation to therapeutic efficacy of tirofiban. *Lancet* 1999;354:1757-1762.
- 11 Lindahl B, Diderholm E, Lagerqvist B, et al. Effects on mortality of long-term treatment with l.m.w. heparin in relation to troponin T level and ECG findings - a FRISC 2 substudy. *Eur Heart J* 2000;21(Suppl.):521.
- 12 Newby LK, Ohman EM, Christenson RH, et al. Benefit of Glycoprotein IIb/IIIa Inhibition in Patients With Acute Coronary Syndromes and Troponin T-Positive Status: The PARAGON-B Troponin T Substudy. *Circulation* 2001;103:2891-2896.
- 13 Alpert JS, Thygesen K. Myocardial Infarction redefined - A consensus document of the joint European Society of Cardiology/American College of Cardiology committee for the redefinition of myocardial infarction. *JACC* 2000;36:959-969.
- 14 Braunwald E, Antman EM, Beasley JW, et al. ACC/AHA guidelines for the management of patients with unstable angina and non-ST-elevation myocardial infarction: Executive summary and recommendations. *Circulation* 2000;102:1193-1209.
- 15 Jaffe AS, Ravkilde J, Roberts R, et al. It's time for a change to a troponin standard. *Circulation* 2000;102:1216-1220.
- 16 Apple FS, Wu AHB. Myocardial infarction redefined: Role of cardiac troponin Testing. *Clin Chem* 2001;47:377-379.
- 17 Setsuta K, Seino Y, Takahashi N, et al. Clinical significance of elevated levels of cardiac troponin T in patients with chronic heart failure. *Am J Cardiol* 1999;84:608-611.



# Troponin T STAT

Troponin T STAT (Short Turn Around Time), CARDIAC T

cobas®






- 18 Sato Y, Kataoka K, Matsumori A, et al. Measuring serum aminoterminal type III procollagen peptide, 7S domain of type IV collagen, and cardiac troponin T in patients with idiopathic dilated cardiomyopathy and secondary cardiomyopathy. *Heart* 1997;78:505-508.
- 19 Lauer B, Niederau C, Kühl U, et al. Cardiac troponin T in patients with clinically suspected myocarditis. *JACC* 1997;30:1354-1359.
- 20 Swaanenburg JCJM, Klaase JM, DeJongste MJL, et al. Troponin I, troponin T, CK-MB-activity and CK-MB mass as markers for the detection of myocardial contusion in patients who experienced blunt trauma. *Clin Chim Acta* 1998;272:171-181.
- 21 Dierkes J, Domrose U, Westphal S, et al. Cardiac troponin T predicts mortality in patients with renal disease. *Circulation* 2000;102:1964-1969.
- 22 Giannitsis E, Müller-Bardorff M, Kurowski V, et al. Independent prognostic value of cardiac troponin T in patients with confirmed pulmonary embolism. *Circulation* 2000;102:211-217.
- 23 James P, Ellis CJ, Whitlock RML, et al. Relation between troponin T concentration and mortality in patients presenting with an acute stroke: observational study. *BMJ* 320:1502-1504.
- 24 ver Elst KM, Spapen HD, Nguyen DN, et al. Cardiac troponin I and T are biological markers of left ventricular dysfunction in septic shock. *Clin Chem* 2000;46:650-657.
- 25 Jenkins DP, Pugsley WB, Alkhulaifi AM, et al. Ischaemic preconditioning in patients undergoing coronary artery bypass surgery. *Heart* 1997;77:314-318.
- 26 Lopez-Jimenez F, Goldman L, Sacks DB, et al. Prognostic value of cardiac troponin T after non-cardiac surgery: 6 month follow up data. *JACC* 1997;29:1241-1245.
- 27 Johansen O, Brekke M, Stromme JH, et al. Myocardial damage during percutaneous transluminal coronary angioplasty as evidenced by troponin T measurements. *Eur Heart J* 1998;19:112-117.
- 28 Herman EH, Lipshultz SE, Rifai N, et al. Use of cardiac troponin T levels as an indicator of doxorubicin-induced cardiotoxicity. *Cancer Res* 1998;58:195-197.
- 29 Ooi DS, Zimmerman D, Graham J, et al. Cardiac troponin T predicts long-term outcomes in hemodialysis patients. *Clin Chem* 2001;47:412-417.
- 30 Apple FS, Murakami MM, Pearce LA, et al. Predictive value of cardiac troponin I and T for subsequent death in end-stage renal disease. *Circulation* 2002;106:2941-2945.
- 31 deFilippi C, Wasserman S, Rosanio S, et al. Cardiac Troponin T and C-reactive protein for predicting prognosis, coronary atherosclerosis, and cardiomyopathy in patients undergoing long term hemodialysis. *JAMA* 2003;290:353-359.
- 32 Iliou MC, Fumeron C, Benoit MO, et al. Prognostic value of cardiac Markers in ESRD: Chronic Hemodialysis and New Cardiac markers Evaluation (CHANCE) study. *Am J Kidney Dis* 2003;42:513-523.
- 33 Choy JB, Armstrong PW, Ulan RA, et al. Do cardiac troponins provide prognostic insight in hemodialysis patients? *Can J Cardiol* 2003;19:907-911.
- 34 Scott B, Deman A, Peeters P, et al. Cardiac troponin T and malondialdehyde modified plasma lipids in haemodialysis patients. *Nephrol Dial Transplant* 2003;18:737-742.
- 35 Davis GK, Labugger R, Van Eyk JE, et al. Cardiac troponin T is not detected in western blots of diseased renal tissue. *Clin Chem* 2001;47:782-783.
- 36 Ricchiuti V, Voss EM, Ney A, et al. Cardiac Troponin T isoforms expressed in renal diseased skeletal muscle will not cause false positive results by the second generation cTnT assay by Boehringer Mannheim; *Clin Chem* 1998;44(9):1919-1924.
- 37 Wu AHB, Feng Y-J, Moore R, et al. Characterization of cardiac troponin subunit release into serum after acute myocardial infarction and comparison of assays for troponin T and I. *Clin Chem* 1998;44:1198-1208.
- 38 Hallermayer K, Klenner D, Vogel R. Use of recombinant human cardiac troponin T for standardization of third generation troponin T methods. *Scand J Clin Invest* 1999;59(Suppl 230):128-131.
- 39 Müller-Bardorff M, Hallermayer K, Schröder A, et al. Improved troponin T ELISA specific for cardiac troponin T isoform: assay development and analytical validation. *Clin Chem* 1997;43(3):458-466.
- 40 Kampmann M, Rauscher T, Müller-Bardorff M, et al. Clinical Evaluation of Troponin T and CK-MB Mass on the Elecsys 2010 analyzer. Poster presented at Medlab 97, 12th IFCC European Congress of Clinical Chemistry, August 17-22, 1997, Basel, Switzerland.
- 41 Kobayashii S, Tanaka M, Tamura N, et al. Serum cardiac troponin T in polymyositis/dermatomyositis. *Lancet* 1992;340(8821):726.
- 42 Mair J, Dienstl F, Puschendorf B. Cardiac Troponin T in the Diagnosis of Myocardial Injury. *Critical Reviews in Clin Lab Sci* 1992;29(1):31-57.
- 43 Carrier M, Solymoss BC, Raymond C, et al. Cardiac Troponin T and Creatine Kinase MB Isoenzyme as Biochemical Markers of Ischemia after Heart Preservation and Transplantation. *J Heart Lung Transplant* 1994;13(4):696-700.
- 44 Löfberg M, Tähtelä R, Härkönen M, et al. Myosin Heavy-Chain Fragments and Cardiac Troponins in the Serum in Rhabdomyolysis. Diagnostic Specificity of New Biochemical Markers. *Arch Neurol* 1995;52:1210-1214.
- 45 Anderson JR, Hossein-Nia M, Brown P, et al. Donor Cardiac Troponin T Predicts Subsequent Inotrope Requirements Following Cardiac Transplantation. *Brief Communications in Transplant* 1994;58(9):1056-1057.
- 46 Franz WM, Remppis A, Kandolf R, et al. Serum Troponin T: Diagnostic Marker for Acute Myocarditis. Letter to the Editor in *Clin Chem* 1996;42(2):340-341.
- 47 Mair P, Mair J, Koller J, et al. Cardiac troponin T in the diagnosis of heart contusion. *Lancet* 1991;338:693.
- 48 Bablok W, Passing H, Bender R, et al. A general regression procedure for method transformation. Application of linear regression procedures for method comparison studies in clinical chemistry, Part III. *J Clin Chem Clin Biochem* 1988 Nov;26(11):783-790.

For further information, please refer to the appropriate operator's manual for the analyzer concerned, the respective application sheets, the product information and the Method Sheets of all necessary components (if available in your country).

A point (period/stop) is always used in this Method Sheet as the decimal separator to mark the border between the integral and the fractional parts of a decimal numeral. Separators for thousands are not used.

## Symbols

Roche Diagnostics uses the following symbols and signs in addition to those listed in the ISO 15223-1 standard.

	Contents of kit
	Analyzers/Instruments on which reagents can be used
	Reagent
	Calibrator
	Volume after reconstitution or mixing

## FOR US CUSTOMERS ONLY: LIMITED WARRANTY

Roche Diagnostics warrants that this product will meet the specifications stated in the labeling when used in accordance with such labeling and will be free from defects in material and workmanship until the expiration date printed on the label. THIS LIMITED WARRANTY IS IN LIEU OF ANY OTHER WARRANTY, EXPRESS OR IMPLIED, INCLUDING ANY IMPLIED WARRANTY OF MERCHANTABILITY OR FITNESS FOR PARTICULAR PURPOSE. IN NO EVENT SHALL ROCHE DIAGNOSTICS BE LIABLE FOR INCIDENTAL, INDIRECT, SPECIAL OR CONSEQUENTIAL DAMAGES.

COBAS, COBAS E, ELECSYS and PRECICONTROL are trademarks of Roche. INTRALIPID is a trademark of Fresenius Kabi AB.

All other product names and trademarks are the property of their respective owners.

Significant additions or changes are indicated by a change bar in the margin.

© 2013, Roche Diagnostics

# Troponin T STAT

Troponin T STAT (Short Turn Around Time), CARDIAC T

cobas®



Roche Diagnostics GmbH, Sandhofer Strasse 116, D-68305 Mannheim  
[www.roche.com](http://www.roche.com)



Distribution in USA by:

Roche Diagnostics, Indianapolis, IN

US Customer Technical Support 1-800-428-2336